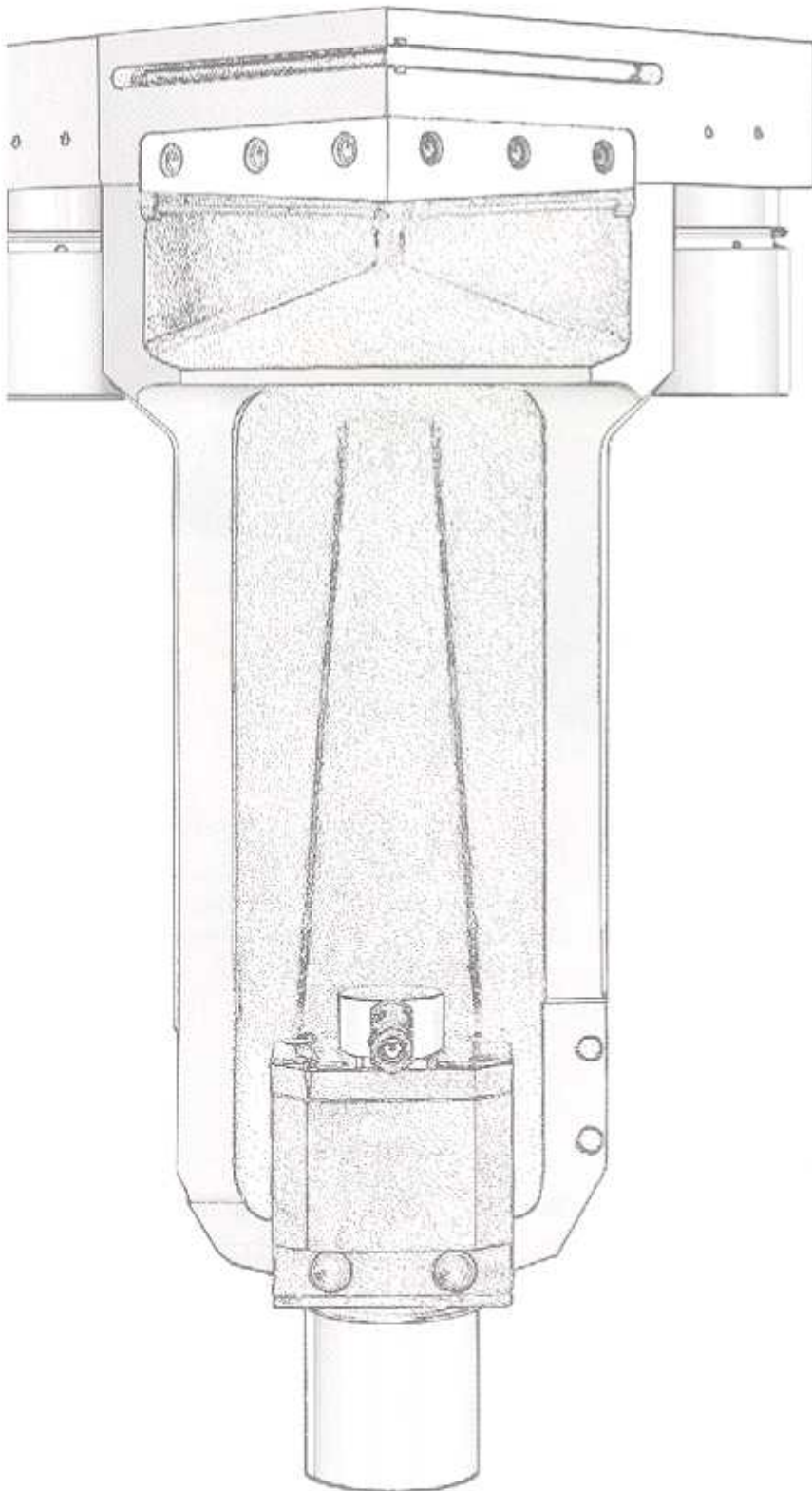


**BOSCHERT**



## **LB12/4 PN/4 LB12/6 PN/6**

Quality made by BOSCHERT



## LB 12/4 PN/4 LB 12/6 PN/6

Please ask for  
the TRI-Gide  
system warranty!



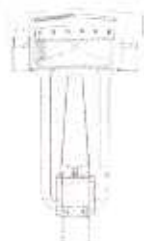
### Hydraulic notching machine

The LB 12/PN model permits notching with a fixed angle of 90°.

It guarantees clean cuts in all sheet metal thicknesses and high repetitive accuracy of the notches. It is also ideally suited for cuts on one side. Because of the special design of the LB 12/PN the blades achieve an extraordinarily high life even when notching special steel.

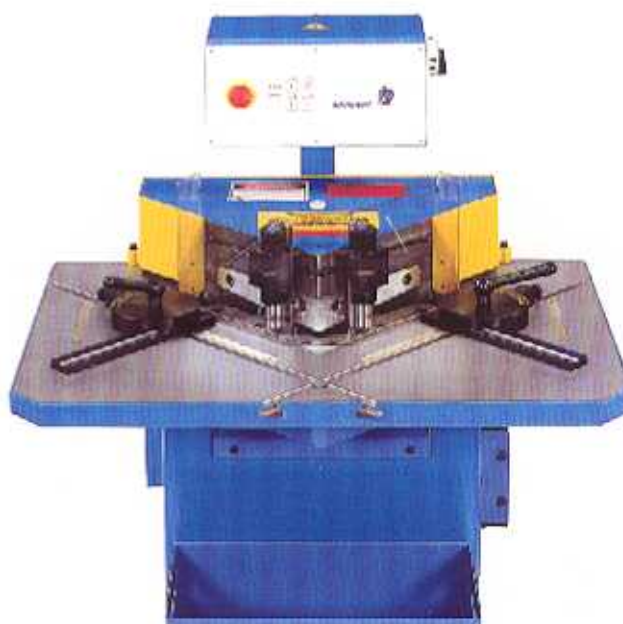
Further characteristics of the LB 12/PN:

- Automatic cutting gap adjustment
- Maintenance-free lubrication system
- Integrated overload protection
- Extremely quiet (whispering machine)



#### TRI-GIDE®

The patented Boschert 3 point ram guidance gives the machines it's famous precision and durability



Picture: LB 12/6 PN6 (LB12/4 PN/4 without hold downs)

The generously designed working table offers an ideal support for small and large sheet metal parts.

#### Special Features :

Movable electrical foot pedal, adjustable stroke, internal stop for shearing, 50 strokes/minute, single or continuous mode jog, brass scales for accurate and easy setup, two heavy duty stops with 300 mm (12") sliding bars and a plexiglas guard for easy viewing.

Patenters received particular importance

Technical data	PN/4	PN/6
Cutting capacity	4 mm mild steel 3 mm stainless	6 mm mild steel 4 mm stainless
Length of cut	225 x 225 mm (8 7/8" x 8 7/8")	
Power supply	5 KVA	
Length	1250 mm (49.2")	
Width	900 mm (35.4")	
Height	1100 mm (43.3")	
Width of table	900 mm (35.4")	
Length of table	620 mm (24.4")	
Height of table	900 mm (35.4")	
Weight	680 kg	700 kg



## BOSCHERT

GmbH+Co.KG

D-79523 Lörrach, P.O. Box 7042

Germany

Telefon ++49 7621 / 9593-0

Telefax ++49 7621 / 55184

<http://www.boschert.de>

e-mail: [infoak@boschert.de](mailto:infoak@boschert.de)

